

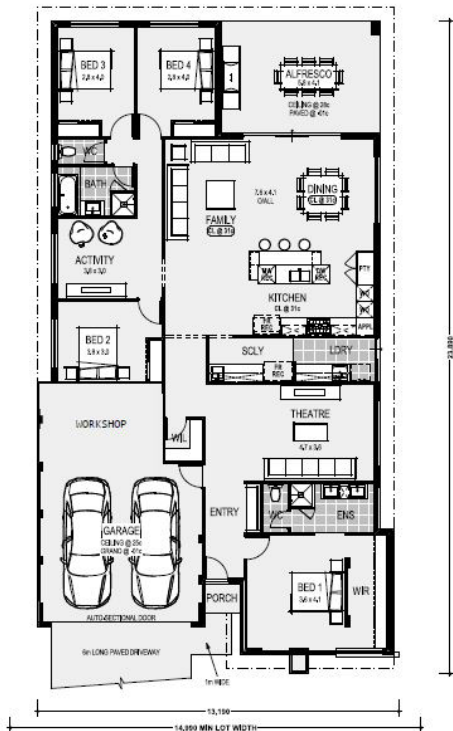
15m x 30m

450m²



The Molini

4  2  2 



FROM
\$413,000*

- \$50k Luxury kitchen, scullery, laundry and bathrooms
- 31c ceilings to living areas
- Ducted reverse cycle AIR CON
- 600x600 porcelain tiles, loop pile carpets
- Resort style Master bedroom and Ensuite
- 30year Structural Warranty
- Stone benchtops and European fixtures throughout



Mark Hickey
0416 725 455

* Prices subject to change without notice.
Photos for illustrative purposes only and
may not comply with design guidelines.