

12.5m x 30m

375m²



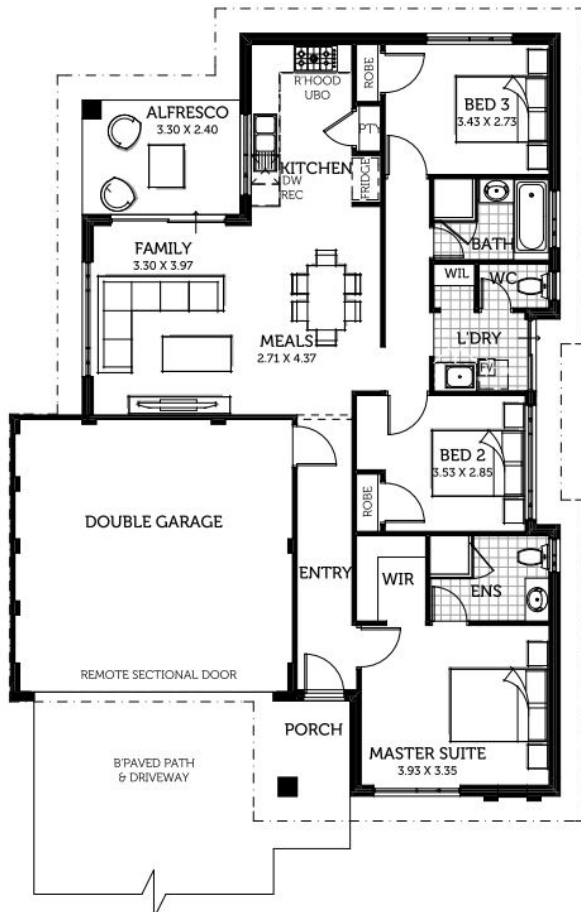
The Dynamo

3  2  2 

FROM

\$337,500*

- 900mm Quality Appliances
- Stone Benchtops to Kitchen & Ensuite
- Open Plan Living
- 3 Designer Elevations



Jeremy O'Donoghue
0420 411 634

* Prices subject to change without notice.
Photos for illustrative purposes only and
may not comply with design guidelines.