

12.5m x 30m

375sqm



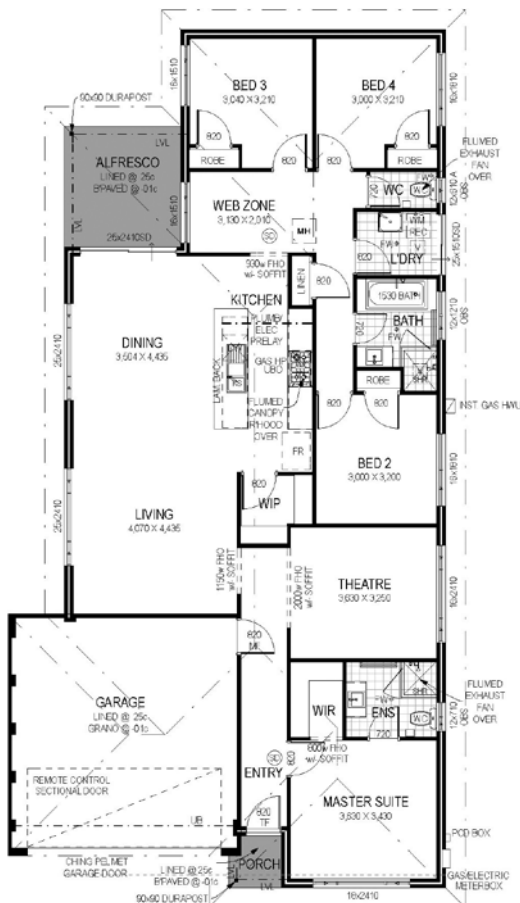
The Monarae

4 2 2

FROM

\$339,990*

- Smeg European 900mm stainless appliances
- Iconic series Clipsal switches
- Minimum 6 Star Energy Rating
- Luxury tapware throughout
- Lifetime Structural Warranty
- Buildfast guarantee
- Fixed site works included and much more!



Impressions
The Home Builder

* Photos for illustrative purposes only and may not comply with design guidelines.
Prices subject to change without notice.